

FOR A GOOD **REASON**
GRUNDIG

Video Surveillance 2011



Grundig is back!

Grundig is back with the new range of CCTV and IP products. Grundig offers advanced video surveillance systems which combine the superior build standards and outstanding levels of design expected of a German company.

The new product range from Grundig incorporates all the latest developments in CCTV technology, whilst maintaining Grundig's long established reputation for exceptional functionality, reliability and production quality.

This catalogue contains all Grundigs' new products, from IP HD cameras, monitors, to 32 channel digital video recorders. They all use cutting edge technology to meet the needs of professional security installers in the global surveillance market.

Grundig, German quality at its best!

FOR A GOOD **REASON**
GRUNDIG

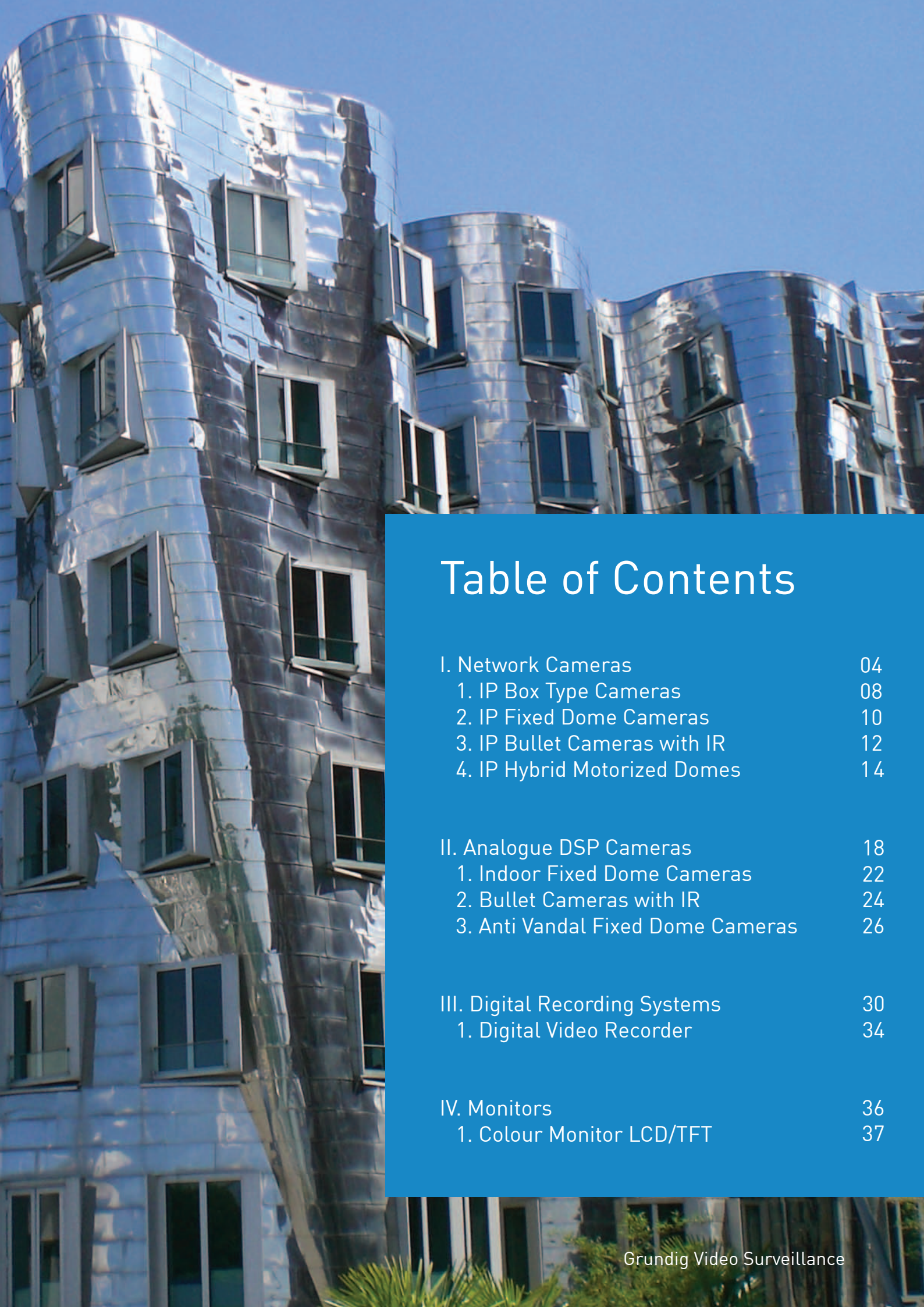


Table of Contents

| | |
|-----------------------------------|----|
| I. Network Cameras | 04 |
| 1. IP Box Type Cameras | 08 |
| 2. IP Fixed Dome Cameras | 10 |
| 3. IP Bullet Cameras with IR | 12 |
| 4. IP Hybrid Motorized Domes | 14 |
| II. Analogue DSP Cameras | 18 |
| 1. Indoor Fixed Dome Cameras | 22 |
| 2. Bullet Cameras with IR | 24 |
| 3. Anti Vandal Fixed Dome Cameras | 26 |
| III. Digital Recording Systems | 30 |
| 1. Digital Video Recorder | 34 |
| IV. Monitors | 36 |
| 1. Colour Monitor LCD/TFT | 37 |



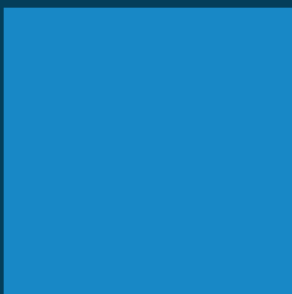
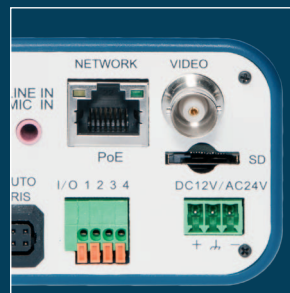
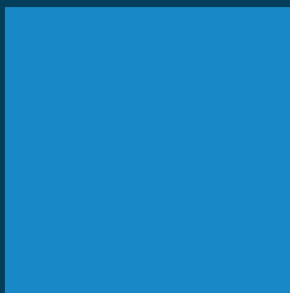
Network Cameras



Network Cameras

Intelligent, robust and stylish

IP technology greatly increases the effectiveness of video surveillance systems. Grundig has embraced this new technology and incorporated it into an extensive CCTV IP surveillance camera range. The new camera range includes PTZ and anti-vandal domes, for internal and external applications, with traditional box and specialist, compact casing designs also available. Each Grundig IP camera has impressive functionality, meeting every current surveillance requirement.



Network Cameras

Technologies and Features

Intelligent motion detection

Grundig network cameras have built-in motion detection functionality, which can be easily and accurately set-up by menu. Each camera has up to 10 different motion detection zones and an individually adjustable threshold setting. These allow motion detection parameters to match the exact needs of each application.

When motion detection is triggered, the Grundig IP cameras offer a number of alert and recording options. CCTV video data can be recorded on to the camera's built-in SD memory card, with 3 seconds of pre-alarm recording. An alert email can also be sent to a PC or mobile phone to raise the alarm. The video images can be transmitted to an FTP server, for viewing. An alarm output connection is also provided for auxiliary device activation.



Detection of moving objects

Set up and configuration

The Grundig set up software allows the user to adjust and monitor all the cameras' network settings from a single menu page, eliminating the need for time consuming and complicated configuration. Each individual camera's configuration profile can be copied to other cameras in the same system, making large system set up fast and efficient.

Time, date and camera ID can be transmitted as part of the image data file for display in playback mode - essential for evidential purposes in some applications.

High temperature capability

Grundig network cameras are designed and built to generate very little excess heat. As a result, they will operate perfectly well in areas of constant high temperature, such as direct sunlight.



Grundig IP Cameras operate in areas of constant high temperature

Outstanding image quality

Grundig network cameras offer outstanding image quality, even when rapid scene movement occurs. They offer a choice of 720 pixel HD and 1080 pixel, Full HD with 25 fps in 16:9 format.



1080P Full HD High Resolution Image



Standard Resolution Image

System security and safety

Grundig network cameras contain built-in security features for comprehensive data and network protection. System security features include an IP Filter for authorized user access to the camera's data; image transmission protection options; and the ability to create certified access levels to specific cameras and data within a system.

Each camera contains a Micro SD memory card, with no external access. Should a network failure occur, the video images will be safely recorded within the camera.

Ease of installation

The Grundig network CCTV cameras are designed for quick and simple installation. Most models are IP and analogue compatible, allowing simple integration into most existing surveillance systems. Their network connection also enables remote software upgrades as new developments and enhancements occur. Grundig IP cameras are compatible with the internationally recognised Open Network Video Interface Forum (ONVIF) standard.



Mobile phone access with the Grundig DynDNS server

The Grundig DynDNS server allows designated users to access, view, monitor and control Grundig IP cameras from anywhere in the world, at any time. The images can be viewed via a web-enabled standard mobile phone or Smartphone. Users are also immediately alerted to any alarms, enabling them to react quickly, wherever they are.

IP Box Type Cameras



Key Features

- ONVIF protocol support
- Micro SD/SDHC memory card slot for alarm and schedule image recording
- Bidirectional Audio Support
- Cost effective professional camera with metal cabinet

GCI-H0602B

- 2 Megapixel Colour IP Camera with HD 720P real time video streaming
- H.264 & MJPEG compression modes (max. 25 fps)
- Power Input DC12V and PoE

GCI-H0503B

- 1.3 Megapixels, Colour/B&W Camera (1280 x 960)
- WDR function, Colour/B&W function with removable IR cut filter
- H.264, MPEG4 & MJPEG decompression modes (max. 25 fps)
- 3DNR super noise reduction for lower recording
- Power Input AC24V/DC12V and PoE

GCI-K0503B

- 2 Megapixel IP Camera with Full HD 1080P real time video streaming
- Day/Night feature with IR cut filter removable (ICR)
- H.264 & MJPEG compression modes (max. 25 fps)
- Power Input AC24V/DC12V and PoE

Ordering Information

| Item Code | Short Description |
|------------|---|
| GCI-H0602B | 720P HD IP Colour Camera |
| GCI-H0503B | 720P HD IP Day/Night Camera WDR Low Light |
| GCI-K0503B | 1080P Full HD IP Day/Night Camera |

Technical Specifications

| Model | GCI-H0602B | GCI-H0503B | GCI-K0503B |
|--------------------------------|--|--|--|
| Image Sensor: | 1/2.7" CMOS Omnivision, 2 megapixel | 1/3" CCD, 1.3 megapixel | 1/2.7" CMOS Omnivision, 2 megapixel |
| Col/B&W: | Auto/Electronic | On/Off/Auto, IR-cut filter removable (ICR) | On/Off/Auto, IR-cut filter removable (ICR) |
| Pixels - total: | 1920(H) x 1080(V), Full HD | 1280 (H) x 960 (V) | 1920(H) x 1080(V), Full HD |
| Sensitivity: | 0.2 lux @ F1.2 | 0.03 lux @ F1.2 (Colour) / 0.001 lux @ F1.2 (B&W) | 0.2 lux @ F1.2 (Colour) / 0.02 lux @ F1.2 (B&W) |
| Lens Mount: | C/CS mount | C/CS mount | C/CS mount |
| Lens Drive Type: | Auto iris, DC | Auto iris, DC | Auto iris, DC |
| Motion Detection: | On/ Off/ Sensitivity/ Area setting | On/ Off/ Sensitivity/ Area setting | On/ Off/ Sensitivity/ Area setting |
| Privacy zones: | 2 zones, rectangle | 5 zones, rectangle | 2 zones, rectangle |
| BLC: | | On/Off + WDR | |
| White Balance: | ATW, AWB, Manual | Auto, Indoor, Outdoor, Manual | ATW, AWB, Manual |
| Digital Noise Reduction (DNR): | | Off/Low/High | |
| Shutter Speed: | 1 sec to 1/10,000 sec | 1 sec to 1/10,000 sec | 1 sec to 1/10,000 sec |
| Camera ID: | 20 character | 20 character | 20 character |
| Alarm Inputs: | 1 | 1 | 1 |
| Alarm Outputs: | 1 | 1 | 1 |
| Number of Clients: | Up to 20 users | Up to 20 users | Up to 20 users |
| Web Browser: | MS Internet Explorer 6.0 (or higher) | MS Internet Explorer 6.0 (or higher) | MS Internet Explorer 6.0 (or higher) |
| Video Compression: | Dual stream: H.264+H.264, H.264+MJPEG, MJPEG+BNC or H.264+BNC | Dual stream: H.264+H.264, H.264+MJPEG, MJPEG+BNC, H.264+BNC or MJPEG+MPEG-4 | Dual stream: H.264+H.264, H.264+MJPEG, MJPEG+BNC or H.264+BNC |
| Video Resolution: | Full HD 1920 x 1080 (12 fps), 720P 1280 X 720 (25 fps) | 1280 X 960 (12 fps), 1280 X 720 (25 fps) | Full HD 1920 x 1080 (25 fps), 720P 1280 X 720 (2x25 fps) |
| SD memory: | Micro SD/SDHC | Micro SD/SDHC | Micro SD/SDHC |
| Network Protocol: | IPv4, IPv6, TCP/IP, UDP, RTP, RTSP, HTTP, HTTPS, ICMP, FTP, SMTP, DHCP, PPPoE, UPnP, IGMP, 802.1X and SNMP | IPv4, IPv6, TCP/IP, UDP, RTP, RTSP, HTTP, HTTPS, ICMP, FTP, SMTP, DHCP, PPPoE, UPnP, IGMP, 802.1X and SNMP | IPv4, IPv6, TCP/IP, UDP, RTP, RTSP, HTTP, HTTPS, ICMP, FTP, SMTP, DHCP, PPPoE, UPnP, IGMP, 802.1X and SNMP |
| Alarm Event: | Alarm Input, Motion Detection or Schedule: Image transfer or alarm message by FTP, Image transfer or alarm message by E-mail, recording on SD-card and enable alarm output | Alarm Input, Motion Detection or Schedule: Image transfer or alarm message by FTP, Image transfer or alarm message by E-mail, recording on SD-card and enable alarm output | Alarm Input, Motion Detection or Schedule: Image transfer or alarm message by FTP, Image transfer or alarm message by E-mail, recording on SD-card and enable alarm output |
| Audio Compression: | G.726 ADPCM, G.711 | G.726 ADPCM, G.711 | G.726 ADPCM, G.711 |
| LED Indicator: | Power, link, active | Power, link, active | Power, link, active |
| Video Outputs: | 1Vpp, BNC | 1Vpp, BNC | 1Vpp, BNC |
| Input/Output sockets: | Video Out(BNC), Power(DC Jack), RJ-45, Micro SD Card Slot, Alarm Terminal 4-Pin(Alarm In 2-Pin, Alarm Out 2-Pin), Audio (2 mini Jack 3.5mm) | Video Out(BNC), Power(3-Pin Term), RJ-45, Micro SD Card Slot, Alarm Terminal 4-Pin (Alarm In 2-Pin, Alarm Out 2-Pin), Audio (2 mini Jack 3.5mm) | Video Out(BNC), Power(3-Pin Term), RJ-45, Micro SD Card Slot, Alarm Terminal 4-Pin (Alarm In 2-Pin, Alarm Out 2-Pin), Audio (2 mini Jack 3.5mm) |
| Firmware Upgrade: | Firmware upgrade by Web Browser | Firmware upgrade by Web Browser | Firmware upgrade by Web Browser |
| Configuration: | Upload & Download configuration on remote PC | Upload & Download configuration on remote PC | Upload & Download configuration on remote PC |
| Operating Temperature: | 0°C ~ +50°C | 0°C ~ +50°C | 0°C ~ +50°C |
| Regulation: | CE, FCC, RoHS Compliant | CE, FCC, RoHS Compliant | CE, FCC, RoHS Compliant |
| Humidity: | 10 ~ 90% no condensation | 10 ~ 90% no condensation | 10 ~ 90% no condensation |
| Supply Voltage: | 12 VDC / PoE IEEE 802.3af | 12 VDC / PoE IEEE 802.3af | 12 VDC / PoE IEEE 802.3af |
| Power Consumption: | 4.5 W | 6 W | 4.5 W |
| Dimensions: | 76 x 53 x 126 mm | 76 x 53 x 126 mm | 76 x 53 x 126 mm |
| Weight: | 0.36 kg | 0.36 kg | 0.36 kg |

IP Fixed Dome Cameras



GCI-K0322V

GCI-H0522V

GCI-K0512W

Key Features

- H.264 & MJPEG compression modes (max. 25 fps)
- ONVIF protocol support
- Micro SD/SDHC memory card slot for alarm and schedule image recording

GCI-H0522V

- 2 Megapixel Colour IP Camera with HD 720P real time video streaming
- 3 Way Axis Gimbal, wall mountable
- Vandal Resistant Dome (IK10)
- Weatherproof outdoor installation (IP66)

GCI-K0322V

- 2 Megapixel IP Camera with Full HD 1080P real time video streaming
- 0 Lux: Integrated LED IR Illuminator
- 3 Way Axis Gimbal, wall mountable
- Vandal Resistant Dome (IK10)

GCI-K0512W

- 2 Megapixel IP Camera with Full HD 1080P real time video streaming
- Vandal Resistant Dome
- Lens: $f = 4 \text{ mm}$

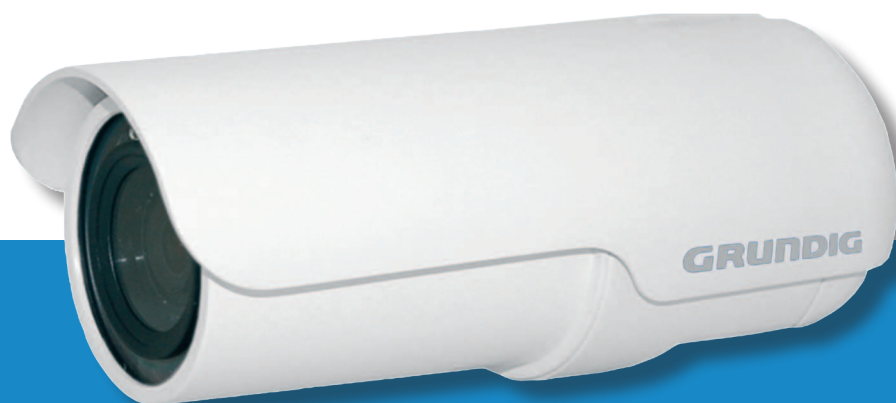
Ordering Information

| Item Code | Short Description |
|------------|--|
| GCI-H0522V | 720P HD IP Colour Fixed Dome Camera |
| GCI-K0322V | 1080P Full HD IP Day/Night Fixed Dome Camera with IR LED |
| GCI-K0512W | 1080P Full HD Flat Fixed Dome IP Camera |

Technical Specifications

| Model | GCI-H0522V | GCI-K0322V | GCI-K0512W |
|------------------------|--|--|--|
| Image Sensor: | 1/2.5" CMOS Aptina, 2 megapixel | 1/2.5" CMOS Aptina, 2 megapixel | 1/2.7" CMOS Omnivision, 2 megapixel |
| Col/B&W: | na | On/Off/Auto, IR-cut filter removable (ICR) | na |
| Pixels - total: | 1920(H) x 1080(V), Full HD | 1920(H) x 1080(V), Full HD | 1920(H) x 1080(V), Full HD |
| Sensitivity: | 0.2 lux @ F1.2 | 0.2 lux @ F1.4 (Colour) / 0.02 lux @ F1.4 (B&W) | 0.1 lux @ F1.6 |
| Lens Drive Type: | Auto iris, DC | Auto iris, DC | na |
| Lens Focal Length: | 3.3 ~ 12 mm | 3.3 ~ 12 mm | 4 mm |
| Viewing Angle: | 71° ~ 21° | 71° ~ 21° | 78° |
| Motion Detection: | On/ Off/ Sensitivity/ Area setting | On/ Off/ Sensitivity/ Area setting | On/ Off/ Sensitivity/ Area setting |
| Privacy zones: | 2 zones, rectangle | 2 zones, rectangle | 2 zones, rectangle |
| White Balance: | ATW, AWB, Manual | ATW, AWB, Manual | ATW, AWB, Manual |
| Shutter Speed: | 1 sec to 1/10,000 sec | 1 sec to 1/10,000 sec | 1 sec to 1/10,000 sec |
| Camera ID: | 20 character | 20 character | 20 character |
| Alarm Inputs: | 1 | 1 | na |
| Alarm Outputs: | 1 | 1 | na |
| Web Browser: | MS Internet Explorer 6.0 (or higher) | MS Internet Explorer 6.0 (or higher) | MS Internet Explorer 6.0 (or higher) |
| Number of Clients: | Up to 20 users | Up to 20 users | Up to 20 users |
| Video Compression: | Dual stream: H.264+H.264, H.264+MJPEG, MJPEG+BNC or H.264+BNC | Dual stream: H.264+H.264, H.264+MJPEG, MJPEG+BNC or H.264+BNC | Dual stream: H.264+H.264, H.264+MJPEG |
| Video Resolution: | HD 1920 x 1080 (12 fps), 720P 1280 X 720 (25 fps) | Full HD 1920 x 1080 (25 fps), 720P 1280 X 720 (2x25 fps) | Full HD 1920 x 1080 (25 fps), 720P 1280 X 720 (2x25 fps) |
| Network Protocol: | IPv4, IPv6, TCP/IP, UDP, RTP, RTSP, HTTP, HTTPS, ICMP, FTP, SMTP, DHCP, PPPoE, UPnP, IGMP, 802.1X and SNMP | IPv4, IPv6, TCP/IP, UDP, RTP, RTSP, HTTP, HTTPS, ICMP, FTP, SMTP, DHCP, PPPoE, UPnP, IGMP, 802.1X and SNMP | IPv4, IPv6, TCP/IP, UDP, RTP, RTSP, HTTP, HTTPS, ICMP, FTP, SMTP, DHCP, PPPoE, UPnP, IGMP, 802.1X and SNMP |
| SD memory: | Micro SD/SDHC | Micro SD/SDHC | Micro SD/SDHC |
| Alarm Event: | Alarm Input, Motion Detection or Schedule: Image transfer or alarm message by FTP, Image transfer or alarm message by E-mail, recording on SD-card, enable alarm output and send HTTP notification | Alarm Input, Motion Detection or Schedule: Image transfer or alarm message by FTP, Image transfer or alarm message by E-mail, recording on SD-card, enable alarm output and send HTTP notification | Motion Detection or Schedule: Image transfer or alarm message by FTP, Image transfer or alarm message by E-mail, recording on SD-card and send HTTP notification |
| Audio Compression: | G.726 ADPCM, G.711 | G.726 ADPCM, G.711 | na |
| LED Indicator: | Power, link, active | Power, link, active | na |
| Video Outputs: | 1Vpp, BNC | 1Vpp, BNC | na |
| Input/Output sockets: | Video Out(BNC), Power(3-Pin Term), RJ-45, Micro SD Card Slot, Alarm Terminal 4-Pin (Alarm In 2-Pin, Alarm Out 2-Pin), Audio (4-Pin) | Video Out(BNC), Power(3-Pin Term), RJ-45, Micro SD Card Slot, Alarm Terminal 4-Pin (Alarm In 2-Pin, Alarm Out 2-Pin), Audio (4-Pin) | RJ-45, Micro SD Card Slot |
| Firmware Upgrade: | Firmware upgrade by Web Browser | Firmware upgrade by Web Browser | Firmware upgrade by Web Browser |
| Configuration: | Upload & Download configuration on remote PC | Upload & Download configuration on remote PC | Upload & Download configuration on remote PC |
| Protection Rating: | IP66 | IP66 | na |
| Max. IR Distance: | na | 15/25 m (according to scene reflexion) | na |
| Operating Temperature: | -10°C ~ +50°C | -10°C ~ +50°C | -10°C ~ +50°C |
| Humidity: | 10 ~ 90% no condensation | 10 ~ 90% no condensation | na |
| Regulation: | CE, FCC, RoHS Compliant | CE, FCC, RoHS Compliant | CE, FCC, RoHS Compliant |
| Supply Voltage: | 12 VDC / 24 VAC / PoE IEEE 802.3af | 12 VDC / 24 VAC / PoE IEEE 802.3af | PoE IEEE 802.3af |
| Power Consumption: | 5.5 W | 5.5 W (Led off), 8.9 W (Led on) | 3.8 W |
| Dimensions: | Ø 151 x 130.5 mm | Ø 151 x 130.5 mm | 110 x 50 x 110 mm |
| Weight: | 0.8 kg | 0.8 kg | 0.18 kg |

IP Bullet Camera with IR



Key Features

- 2 Megapixel Full HD, Colour/B&W Camera (1920 x 1080)
- H.264 & MJPEG compression modes (max. 25 fps)
- Day/Night feature with IR cut filter removable (ICR)
- 0 Lux: Integrated LED IR Illuminator
- ONVIF protocol support
- Weatherproof Outdoor Installation (IP66)
- Micro SD/SDHC memory card slot for alarm and schedule image recording

Ordering Information

| Item Code | Short Description |
|------------|--|
| GCI-K0523T | 1080P Full HD IP Bullet Camera Varifocal |

Technical Specifications

| | |
|------------------------|---|
| Model | GCI-K0523T |
| Image Sensor: | 1/2.7" CMOS Omnivision, 2 megapixel |
| Col/B&W: | On/Off/Auto, IR-cut filter removable (ICR) |
| Pixels - total: | 1920(H) x 1080(V), Full HD |
| Sensitivity: | 0.2 lux @ F1.2 (Colour) / 0.02 lux @ F1.2 (B&W) |
| Focal Length: | 3.3 ~ 12 mm |
| Lens Mount: | C/CS mount |
| Lens Drive Type: | DC auto iris, manual iris |
| IR LED: | 23 pcs. |
| Max. IR Distance: | 20 m |
| Motion Detection: | On/ Off/ Sensitivity/ Area setting |
| Camera ID: | 20 character |
| White Balance: | ATW, Manual |
| Shutter Speed: | 1 sec to 1/10,000 sec |
| Alarm Inputs: | 1 |
| Alarm Outputs: | 1 |
| Web Browser: | MS Internet Explorer 6.0 (or higher) |
| Number of Clients: | Up to 20 users |
| Video Compression: | Dual stream: H.264+H.264, H.264+MJPEG, MJPEG+BNC or H.264+BNC |
| Video Resolution: | Full HD 1920 x 1080 (25 fps), 720P 1280 X 720 (2x25 fps) |
| Network Protocol: | IPv4, IPv6, TCP/IP, UDP, RTP, RTSP, HTTP, HTTPS, ICMP, FTP, SMTP, DHCP, PPPoE, UPnP, IGMP, 802.1X and SNMP |
| SD memory: | Micro SD/SDHC |
| Alarm Event: | Alarm Input, Motion Detection or Schedule: Image transfer FTP, E-mail, recording on SD-card |
| Audio Compression: | G.726 ADPCM, AAC |
| Video Outputs: | 1 CVBS, 1Vpp, BNC |
| Firmware Upgrade: | Firmware upgrade by Web Browser |
| Configuration: | Upload & Download configuration on remote PC |
| Input/Output sockets: | Video Out(BNC), Power(3-Pin Term), RJ-45, Micro SD Card Slot, Alarm Terminal 4-Pin (Alarm In 2-Pin, Alarm Out 2-Pin), Audio (2 mini Jack 3.5mm) |
| Protection Rating: | IP66 |
| Operating Temperature: | -20°C ~ +50°C |
| Humidity: | 10 ~ 90% no condensation |
| Regulation: | CE, FCC, RoHS Compliant |
| Supply Voltage: | 12 VDC / 24 VAC / PoE IEEE 802.3af |
| Power Consumption: | 9.1 W |
| Dimensions: | 195 x 90 x 90 mm |

IP Hybrid Motorized Dome Cameras



Key Features

- Full D1, Colour/B&W speed Dome Camera (720x576)
- WDR function, Colour/B&W function with removable IR cut filter
- H.264 Main Profile compression mode (dual codec, 25 fps max)
- ONVIF protocol support
- Micro SD/SDHC memory card slot for alarm and schedule image recording
- Bidirectional Audio Support

GCI-C0735P

- 12x motorized optical zoom with 12x digital zoom
- High Speed Pan/Tilt (400°/sec), minimum speed (1°/sec)

GCI-C0745P

- 36x motorized optical zoom with 12x digital zoom
- Weatherproof Outdoor Installation (IP66)
- High Speed Pan/Tilt (400°/sec), minimum speed (0.5°/sec)

Ordering Information

| Item Code | Short Description |
|------------|--|
| GCI-C0735P | Mini PTZ Dome IP Camera Day/Night with 12x Zoom |
| GCI-C0745P | Outdoor PTZ Dome IP Camera Day/Night with 36x Zoom and WDR |

Technical Specifications

| Model | GCI-C0735P | GCI-C0745P |
|---------------------------------|--|--|
| Image Sensor: | 1/4" CCD (Sony ExView HAD) | 1/4" CCD (Sony Super HAD 2) |
| Digital Signal Processor (DSP): | Sony EFFIO DSP solution | Sony EFFIO DSP solution |
| Col/B&W: | On/Off/Auto, IR-cut filter removable (ICR) | On/Off/Auto, IR-cut filter removable (ICR) |
| Pixels - total: | 795 x 596 | 795 x 596 |
| Sensitivity: | 0.1 lux (Colour) / 0.01 lux (B&W) | 0.1 lux (Colour) / 0.01 lux (B&W) |
| S/N Ratio: | 50 dB | 50 dB |
| Resolution: | 650(H) lines | 650(H) lines |
| BLC: | On/Off + WDR | On/Off + WDR |
| White Balance: | Auto, Manual, Indoor, Outdoor, ATW | Auto, Manual, Indoor, Outdoor, ATW |
| Shutter Speed: | 1 sec to 1/10,000 sec | 1 sec to 1/10,000 sec |
| Camera ID: | 20 character | 20 character |
| Number of Privacy Zones: | 16 | 16 |
| Pan Speed: | Manual: 1°/s ~ 80°/s, Preset: 400°/s (max.) | Manual: 0.5°/s ~ 90°/s, Preset: 400°/s (max.) |
| Tilt Speed: | Manual: 1°/s ~ 80°/s, Preset: 400°/s (max.) | Manual: 0.5°/s ~ 90°/s, Preset: 400°/s (max.) |
| Range Panning: | 360° endless | 360° endless |
| Range Tilting: | -10° ~ 190° | -10° ~ 190° |
| Number of Preset: | 256 | 256 |
| Number of Pattern: | 8 | 8 |
| Lens Drive Type: | Auto iris, DC | Auto iris, DC |
| Focal Length: | 3.8 ~ 45.6 mm | 3.4 ~ 122.4 mm |
| Zoom Ratio: | x 12 | x 36 |
| Digital Zoom: | Off/1 ~ 12x | Off/1 ~ 12x |
| OSD: | Yes | Yes |
| Video Outputs: | 1Vpp, BNC | 1Vpp, BNC |
| Alarm Inputs: | 4 | 4 |
| Alarm Outputs: | 1 | 1 |
| Web Browser: | MS Internet Explorer 6.0 (or higher) | MS Internet Explorer 6.0 (or higher) |
| Video Compression: | Dual stream: H.264+H.264, H.264+MJPEG | Dual stream: H.264+H.264, H.264+MJPEG |
| Network Protocol: | IPv4, IPv6, TCP/IP, UDP, RTP, RTSP, HTTP, HTTPS, ICMP, FTP, SMTP, DHCP, PPPoE, UPnP, IGMP, 802.1X and SNMP | IPv4, IPv6, TCP/IP, UDP, RTP, RTSP, HTTP, HTTPS, ICMP, FTP, SMTP, DHCP, PPPoE, UPnP, IGMP, 802.1X and SNMP |
| SD memory: | Micro SD/SDHC | Micro SD/SDHC |
| Alarm Event: | Alarm Input, Motion Detection or Schedule: Image transfer or alarm message by FTP, Image transfer or alarm message by E-mail, recording on SD-card and enable alarm output | Alarm Input, Motion Detection or Schedule: Image transfer or alarm message by FTP, Image transfer or alarm message by E-mail, recording on SD-card and enable alarm output |
| Audio Compression: | G.726 ADPCM, G.711 | G.726 ADPCM, G.711 |
| Firmware Upgrade: | Firmware upgrade by Web Browser | Firmware upgrade by Web Browser |
| Regulation: | CE, FCC, RoHS Compliant | CE, FCC, RoHS Compliant |
| Operating Temperature: | 0°C ~ +40°C | -45°C ~ +50°C |
| Protection Rating: | na | IP66 |
| Supply Voltage: | 24 VAC | 24 VAC |
| Power Consumption: | 18 W | 65 W |
| Dimensions: | Ø 156 X 203 mm | Ø 190 X 302.5 mm |
| Weight: | 1.2 kg | 2.6 kg |

Accessories for IP Hybrid Motorized Domes

Ceiling Mount Bracket

Model:**GBR-UC01**

Suitable for:

GCI-C0735P

Body material:

Steel, Plastic

Colour:

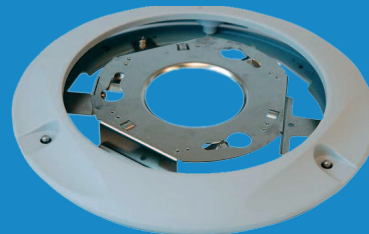
White

Dimensions:

ø 158 x 21.4 mm

Weight:

0.2 kg



Ceiling Flush Mount Adapter

Model:**GBR-IC01**

Suitable for:

GCI-C0735P

Body material:

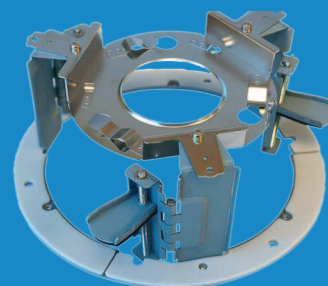
Steel

Colour:

White

Dimensions:

ø 179 x 132 mm



Hanging Mount Adapter

Model:**GBR-AM01**

Suitable for:

GCI-C0735P

Body material:

Die cast aluminium

Colour:

White

Dimensions:

Ø 140.7 X 73.9 mm

Weight:

0.5 kg



Wall Bracket

Model:**GBR-WA02**

Suitable for:

GCI-C0745P, GCI-C0735P

Body material:

Die cast aluminium

Colour:

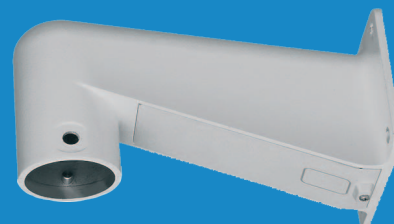
White

Dimensions:

104 x 127 x 184 mm

Weight:

0.6 kg



Accessories for IP Hybrid Motorized Domes

Ceiling Mount Bracket

Model:

GBR-CE01

Suitable for:

GCI-C0745P, GCI-C0735P

Body material:

Steel

Colour:

White

Dimensions:

115 x 183 x 100 mm

Weight:

2.2 kg



Pole Mount Adapter

Model:

GBR-PM01

Suitable for:

GBR-WA02

Body material:

Steel

Colour:

White

Dimensions:

270 x 170 x 60 mm

Weight:

1 kg



Counter Mount Adapter

Model:

GBR-CM01

Suitable for:

GBR-WA02

Body material:

Steel

Colour:

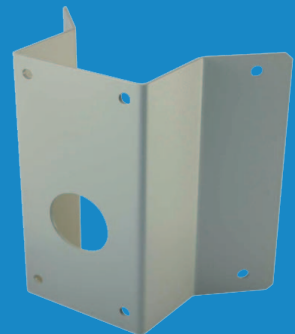
White

Dimensions:

222 x 204 x 117 mm mm

Weight:

2 kg





Analogue DSP Cameras

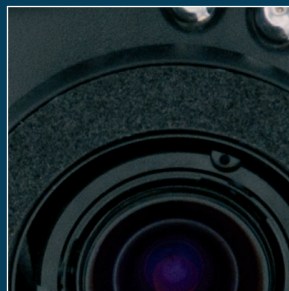


Grundig Analogue DSP Cameras

High quality, reliable and effective.

Grundig analogue cameras have been designed and built to the very highest standards. Grundig has selected components which deliver outstanding image quality, including the very best image sensors, lenses and digital signal processors (DSPs). The cameras have been designed for up-to-date surveillance applications, incorporating functionality such as extended dynamic range, motion adaptive digital noise reduction, intelligent video analytics and more.

All the cameras in the Grundig analogue range have unique features in different housings to suit all eventualities. Outdoor options include Bullet cameras with infrared LED and vandal-resistant domes and indoor options include a large range of dome cameras



Analogue DSP Cameras

Technologies and Features

Wide Dynamic Range

Back-lit or high-contrast scenes, such as in the glazed entrance-areas of a building, can cause a loss of detail in the darker parts of an image for many cameras.

The Grundig PAL camera range offers excellent image quality for all areas of high contrast scenes, without compromising image detail in either the light or dark zones.

The Grundig WDR cameras use a wide dynamic range sensor to improve recording under backlit conditions, by up to 160 times.

WDR off



WDR on



600 TVL horizontal resolution

Grundig PAL cameras have 600 TVL horizontal resolution, delivering exceptional image quality and clarity. The detailed video images increase detection and recognition capability. These cameras are ideal for use in mission-critical applications, where image quality is paramount or essential for evidential purposes.

Digital Noise Reduction (DNR)

The Digital Noise Reduction technology within the Grundig analogue camera range minimizes image noise and movement blur. The cameras are ideal for challenging night-time or low-light surveillance applications and camera scenes with a lot of moving objects. The technology incorporates a specialist filter system comprising, an intuitive 2D filter to reduce noise in low light parts of an image and an adaptive 3D filter which increases image clarity where movement occurs.

DNR off

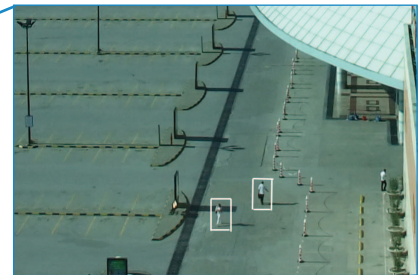


DNR on



Intelligent Video Analysis – Motion Detection and Tracking

The analogue camera range from Grundig has built-in Intelligent Video Analysis for motion detection and tracking. This functionality increases the efficiency and effectiveness of a surveillance system. It will automatically detect motion within designated areas of a camera scene, or track objects, alerting operators or triggering alarms as a result. Any potential threats are identified immediately and dealt with appropriately.



Detection and Tracking of moving objects

Digital Image Stabilisation

Outdoor camera applications are affected by a variety of environmental conditions, such as strong winds. Grundig analogue cameras have built-in Digital Image Stabilisation (DIS) to minimise the blurring caused by high winds and camera shake.

Privacy protection

It is essential that any CCTV camera is able to meet privacy laws and regulations, viewing only the required and legal areas in a scene. Grundig analogue cameras contain Privacy Masking technology, allowing private areas of a scene to be blanked out. This technology is easily configured to suit each application and camera view.

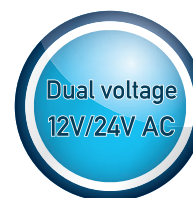
Without privacy protection



With privacy protection



Indoor Fixed Dome Cameras



Key Features

- Digital Signal Processor with Motion Adaptive Digital Noise Reduction (DNR)
- Digital Image Stabilisation (DIS), Picture in Picture (PiP), Privacy Zones
- Intelligent Video Content Analysis with Motion Tracking
- Built-in Service Monitor Port & OSD Control Port
- 600 TV Lines excellent high horizontal resolution
- TAMRON Varifocal Lens: f=2.4-6mm & 2.8-10.5mm, auto iris, extra wide angle
- CCVC (Camera Control Via Coaxial Cable)

Ordering Information

| Item Code | Short Description |
|------------|--|
| GCA-B0322D | 1/3" CCD Fixed Dome Camera 2.5~6mm Soft Day/Night |
| GCA-B0323D | 1/3" CCD Fixed Dome Camera 2.8~10.5mm ICR Day/Night with 24 IR LED |
| GCA-B1322D | 1/3" CCD Fixed Dome Camera 2.8~10.5mm Soft Day/Night |
| GCA-B0325D | 1/3" CCD Fixed Dome Camera 2.8~10.5mm ICR Day/Night with WDR |

Technical Specifications

| Model | GCA-B0322D | GCA-B0323D | GCA-B1322D | GCA-B0325D |
|------------------------------------|--|---|--|---|
| Image Sensor: | 1/3" CCD (Sony Super HAD IT) | 1/3" CCD (Sony Super HAD IT) | 1/3" CCD (Sony Super HAD IT) | 1/3" CCD (Sony PS Super HAD with WDR) |
| Image Size: | Pixel Total: 795 x 596, Pixel Effective: 752 x 582 | Pixel Total: 795 x 596, Pixel Effective: 752 x 582 | Pixel Total: 795 x 596, Pixel Effective: 752 x 582 | Pixel Total: 795 x 596, Pixel Effective: 752 x 582 |
| Resolution: | 600 (H) lines | 600(H) lines colour, 640 (H) lines b&w | 600 (H) lines | 600(H) lines colour, 640 (H) lines b&w |
| Col/B&W: | Auto (Electrical) / Color / B/W | On/Off/Auto, IR-cut filter removable (ICR) | Auto (Electrical) / Color / B/W | On/Off/Auto, IR-cut filter removable (ICR) |
| Scanning System: | PAL, 50Hz, 625 TVL(V), 2:1 Inter Line Transfer | PAL, 50Hz, 625 TVL(V), 2:1 Inter Line Transfer | PAL, 50Hz, 625 TVL(V), 2:1 Inter Line Transfer | PAL, 50Hz, 625 TVL(V), 2:1 Inter Line Transfer |
| Sensitivity Colour: | 0.4 Lux(50IRE) @ F1.2, 0.001 Lux (15IRE, Sens up x256) | 0.4 lux @ 50IRE F1.2, 0.001 lux sens up 256x | 0.4 Lux(50IRE) @ F1.2, 0.001 Lux (15IRE, Sens up x256) | 0.4 Lux(50IRE) 0.001 Lux (15IRE, Sense x256) |
| Sensitivity B&W: | na | 0.04 lux @ 50IRE f1.2, 0.0001 lux sens up 256x | na | 0.04 Lux(50IRE) 0.00004 Lux (15IRE, Sense up x256) |
| S/N Ratio: | 52 dB | 52 dB | 52 dB | 52 dB |
| Lens Drive Type: | Auto iris, DC | Auto iris, DC | Auto iris, DC | Auto iris, DC |
| Lens Focal Length: | 2.4 ~ 6 mm (TAMRON) | 2.8 ~ 10.5 mm (TAMRON) | 2.8 ~ 10.5 mm (TAMRON) | 2.8 ~ 10.5 mm (TAMRON) |
| Sens Up: | Off ~ x256, auto | Off ~ x256, auto | Off ~ x256, auto | Off ~ x256, auto |
| Motion Detection: | On/Off/Sensitivity/Area setting | On/Off/Sensitivity/Area setting | On/Off/Sensitivity/Area setting | On/Off/Sensitivity/Area setting |
| Number of Privacy Zones: | 8 (polygonal method) | 8 (polygonal method) | 8 (polygonal method) | 8 (polygonal method) |
| High Speed Shutter: | 1/50 ~ 1/10.000 sec, auto | 1/50 ~ 1/10.000 sec, auto | 1/50 ~ 1/10.000 sec, auto | 1/50 ~ 1/10.000 sec, auto |
| AGC: | Off/On (Very LOW/LOW/Mid/High/Very High/User/Fix) | Off/On (Very LOW/LOW/Mid/High/Very High/User/Fix) | Off/On (Very LOW/LOW/Mid/High/Very High/User/Fix) | Off/On (Very LOW/LOW/Mid/High/Very High/User/Fix) |
| Wide Dynamic Range: | na | na | na | On/Off, extreme backlight compensation (WDR x160) |
| BLC: | On/Off/Area/Level | On/Off/Area/Level | On/Off/Area/Level | On/Off/Area/Level |
| Digital Noise Reduction (DNR): | Off / On (Low/Middle/High/User) | Off / On (Low/Middle/High/User) | Off / On (Low/Middle/High/User) | Off / On (Low/Middle/High/User) |
| Digital Image Stabilization (DIS): | Off/On | Off/On | Off/On | Off/On |
| Digital Zoom: | Off/1 ~ 10x | Off/1 ~ 10x | Off/1 ~ 10x | Off/1 ~ 10x |
| Reverse: | Off/ H-REV/ V-REV/ HV-REV/ POSITIV/ NEGATIV | Off/ H-REV/ V-REV/ HV-REV/ POSITIV/ NEGATIV | Off/ H-REV/ V-REV/ HV-REV/ POSITIV/ NEGATIV | Off/ H-REV/ V-REV/ HV-REV/ POSITIV/ NEGATIV |
| PIP: | On/Off | On/Off | On/Off | On/Off |
| Intelligent Video Analytics: | Tracking/Detection | Tracking/Detection | Tracking/Detection | Tracking/Detection |
| OSD: | Yes, E/F/D/S/I | Yes, E/F/D/S/I | Yes, E/F/D/S/I | Yes, E/F/D/S/I |
| Camera ID: | 54 character, 2 lines | 54 character, 2 lines | 54 character, 2 lines | 54 character, 2 lines |
| White Balance: | ATW-1/ATW-2/AWC/Manual | ATW-1/ATW-2/AWC/Manual | ATW-1/ATW-2/AWC/Manual | ATW-1/ATW-2/AWC/Manual |
| IR LED: | na | 24 pcs | na | na |
| Optical Wavelength: | na | 850 nm | na | na |
| Max. IR Distance: | na | 25 m | na | na |
| Remote Control: | CCVC, data on coax cable | CCVC, data on coax cable | CCVC, data on coax cable | CCVC, data on coax cable |
| Video Outputs: | 1 CVBS 1 Vpp (BNC) & 1 test monitor out | 1 CVBS 1 Vpp (BNC) & 1 test monitor out | 1 CVBS 1 Vpp (BNC) & 1 test monitor out | 1 CVBS 1 Vpp (BNC) & 1 test monitor out |
| Accessories included: | Cable for service monitor with service remote control | Cable for service monitor with service remote control | Cable for service monitor with service remote control | Cable for service monitor with service remote control |
| Humidity: | less than 90% | less than 90% | less than 90% | less than 90% |
| Operating Temperature: | -10°C ~ +50°C | -10°C ~ +50°C | -10°C ~ +50°C | -10°C ~ +50°C |
| Supply Voltage: | 12 VDC/24 VAC | 12 VDC/24 VAC | 12 VDC/24 VAC | 12 VDC/24 VAC |
| Power Consumption: | 2.5 W | 5.3 W (LED on) | 2.5 W | 2.5 W |
| Dimensions: | Ø 122 x 95 | Ø 122 x 95 | Ø 122 x 95 | Ø 122 x 95 |
| Weight: | 320 g | 500 g | 320 g | 320 g |

Bullet Cameras with IR



Key Features

- Digital Signal Processor with Motion Adaptive Digital Noise Reduction (DNR)
- Digital Image Stabilisation (DIS), Picture in Picture (PiP), Privacy Zones
- Intelligent Video Content Analysis with Motion Tracking
- Built-in Service Monitor Port & OSD Control Port
- 0 Lux: Integrated LED IR Illuminator
- CCVC (Camera Control Via Coaxial Cable)
- Power Input AC24V/DC12V

Ordering Information

| Item Code | Short Description |
|------------|---|
| GCA-B2323T | 1/3" CCD Bullet Varifocal Camera 2.8~11mm with 36 LED & Internal Adjustment |
| GCA-B0323T | 1/3" CCD Bullet Varifocal Camera 2.8~11mm with 36 LED & External Adjustment |
| GCA-B1323T | 1/3" CCD Bullet Varifocal Camera 6~50mm with 48 LED & External Adjustment |

Technical Specifications

| Model | GCA-B2323T | GCA-B0323T | GCA-B1323T |
|--------------------------------|---|---|---|
| Image Sensor: | 1/3" CCD (Sony Super HAD IT) | 1/3" CCD (Sony Super HAD IT) | 1/3" CCD (Sony Super HAD IT) |
| Scanning System: | PAL, 50Hz, 625 TVL(V), 2:1 Inter Line Transfer | PAL, 50Hz, 625 TVL(V), 2:1 Inter Line Transfer | PAL, 50Hz, 625 TVL(V), 2:1 Inter Line Transfer |
| Image Size: | Pixel Total: 795 x 596, Pixel Effective: 752 x 582 | Pixel Total: 795 x 596, Pixel Effective: 752 x 582 | Pixel Total: 795 x 596, Pixel Effective: 752 x 582 |
| Resolution: | 600(H) lines colour, 640 (H) lines b&w | 600(H) lines colour, 640 (H) lines b&w | 600(H) lines colour, 640 (H) lines b&w |
| Col/B&W: | On/Off/Auto/Ext, IR-cut filter removable (ICR) | On/Off/Auto/Ext, IR-cut filter removable (ICR) | On/Off/Auto/Ext, IR-cut filter removable (ICR) |
| Sensitivity Colour: | 0.4 Lux[50IRE] 0.0004 Lux (15IRE, Sense up x256) | 0.4 Lux[50IRE] 0.001 Lux (15IRE, Sense x256) | 0.4 Lux[50IRE] 0.001 Lux (15IRE, Sense x256) |
| Sensitivity B&W: | 0 Lux LED IR on | 0 Lux LED IR on | 0 Lux LED IR on |
| S/N Ratio: | 52 dB | 52 dB | 52 dB |
| Lens Drive Type: | Auto iris, DC | Auto iris, DC | Auto iris, DC |
| Adjustment zoom and focus: | Internal | External | External |
| Lens Focal Length: | 2.8 ~ 11 mm | 2.8 ~ 11 mm | 6 ~ 50 mm |
| Sens Up: | Off ~ x256, auto | Off ~ x256, auto | Off ~ x256, auto |
| Motion Detection: | On/Off/Area Setting | On/Off/Sensitivity/Area setting | On/Off/Area Setting |
| Number of Privacy Zones: | 8 (polygonal method) | 8 (polygonal method) | 8 (polygonal method) |
| High Speed Shutter: | 1/50 ~ 1/10.000 sec, auto | 1/50 ~ 1/10.000 sec, auto | 1/50 ~ 1/10.000 sec, auto |
| AGC: | Off/On (Very LOW/LOW/Mid/High/Very High/User/Fix) | Off/On (Very LOW/LOW/Mid/High/Very High/User/Fix) | Off/On (Very LOW/LOW/Mid/High/Very High/User/Fix) |
| BLC: | On/Off/Area/Level | On/Off/Area/Level | On/Off/Area/Level |
| Digital Zoom: | Off/1 ~ 10x | Off/1 ~ 10x | Off/1 ~ 10x |
| Digital Noise Reduction (DNR): | Off / On (Low/Middle/High/User) | Off / On (Low/Middle/High/User) | Off / On (Low/Middle/High/User) |
| Reverse: | Off/ H-REV/ V-REV/ HV-REV/ POSITIV/ NEGATIV | Off/ H-REV/ V-REV/ HV-REV/ POSITIV/ NEGATIV | Off/ H-REV/ V-REV/ HV-REV/ POSITIV/ NEGATIV |
| Additional Features: | Digital Zoom, PIP, H/V Reverse, Positive/Negative inversion | Digital Zoom, PIP, H/V Reverse, Positive/Negative inversion | Digital Zoom, PIP, H/V Reverse, Positive/Negative inversion |
| Intelligent Video Analytics: | Tracking/Detection | Tracking/Detection | Tracking/Detection |
| OSD: | Yes, E/F/D/S/I | Yes, E/F/D/S/I | Yes, E/F/D/S/I |
| Camera ID: | 54 character, 2 lines | 54 character, 2 lines | 54 character, 2 lines |
| White Balance: | ATW-1/ATW-2/AWC/Manual | ATW-1/ATW-2/AWC/Manual | ATW-1/ATW-2/AWC/Manual |
| IR LED: | 36 pcs. | 36 pcs. | 48 pcs. |
| Optical Wavelength: | 850 nm | 850 nm | 850 nm |
| Max. IR Distance: | 30/45 m (according to scene reflexion) | 30/45 m (according to scene reflexion) | 45/70 m (according to scene reflexion) |
| Protection Rating: | IP66 | IP66 | IP66 |
| Video Outputs: | 1 CVBS 1 Vpp (BNC) & 1 test monitor out | 1 CVBS 1 Vpp (BNC) & 1 test monitor out | 1 CVBS 1 Vpp (BNC) & 1 test monitor out |
| Accessories included: | Cable for service monitor with service remote control | Cable for service monitor with service remote control | Cable for service monitor with service remote control |
| Humidity: | less than 90% | less than 90% | less than 90% |
| Operating Temperature: | -10°C ~ +50°C | -10°C ~ +50°C | -10°C ~ +50°C |
| Supply Voltage: | 12 VDC/24 VAC | 12 VDC/24 VAC | 12 VDC/24 VAC |
| Power Consumption: | 7 W (LED on) | 7 W (LED on) | 8.9 W (LED on) |
| Dimensions: | Ø 80 x 178 mm | Ø 80 x 178 mm | Ø 80 x 178 mm |

Anti Vandal Fixed Dome Cameras



Key Features

- Digital Signal Processor with Motion Adaptive Digital Noise Reduction (DNR)
- Digital Image Stabilisation (DIS), Picture in Picture (PiP), Privacy Zones
- Rugged antivandal body made of die-cast aluminium for outdoor application, 3 ways to mount: Flat, flush and angle
- 600 TV Lines excellent high horizontal resolution
- TAMRON Varifocal Lens: $f = 2.8 - 10.5$ mm, auto iris
- Day/Night feature
- Built-in Service Monitor Port & OSD Control Port
- Intelligent Video Content Analysis with Motion Tracking

Ordering Information

| Item Code | Short Description |
|------------|---|
| GCA-B0322V | 1/3" CCD AV Fixed Dome Camera 2.8~10.5mm Soft Day/Night |
| GCA-B1323V | 1/3" CCD AV Fixed Dome Camera 2.8~10.5mm ICR Day/Night |
| GCA-B0323V | 1/3" CCD AV Fixed Dome Camera 2.8~10.5mm ICR Day/Night with 36 IR LED |
| GCA-B0325V | 1/3" CCD AV Fixed Dome Camera 2.8~10.5mm ICR Day/Night with WDR |

Technical Specifications

| Model | GCA-B0322V | GCA-B1323V | GCA-B0323V | GCA-B0325V |
|------------------------------------|---|---|---|---|
| Image Sensor: | 1/3" CCD (Sony Super HAD II) | 1/3" CCD (Sony Super HAD II) | 1/3" CCD (Sony Super HAD II) | 1/3" CCD (Sony PS Super HAD with WDR) |
| Scanning System: | PAL, 50Hz, 625 TVL(V), 2:1 Inter Line Transfer | PAL, 50Hz, 625 TVL(V), 2:1 Inter Line Transfer | PAL, 50Hz, 625 TVL(V), 2:1 Inter Line Transfer | PAL, 50Hz, 625 TVL(V), 2:1 Inter Line Transfer |
| Image Size: | Pixel Total: 795 x 596, Pixel Effective: 752 x 582 | Pixel Total: 795 x 596, Pixel Effective: 752 x 582 | Pixel Total: 795 x 596, Pixel Effective: 752 x 582 | Pixel Total: 795 x 596, Pixel Effective: 752 x 582 |
| Resolution: | 600 (H) lines | 600(H) lines colour, 640 (H) lines b&w | 600(H) lines colour, 640 (H) lines b&w | 600(H) lines colour, 640 (H) lines b&w |
| Col/B&W: | Auto (fixed IR-Cut filter) | On/Off/Auto/Ext, IR-cut filter removable (ICR) | On/Off/Auto/Ext, IR-cut filter removable (ICR) | On/Off/Auto/Ext, IR-cut filter removable (ICR) |
| Sensitivity Colour: | 0.4 Lux(50IRE) @ F1.2, 0.001 Lux (15IRE, Sens up x256) | 0.4 lux @ 50IRE F1.2, 0.001 lux sens up 256x | 0.4 Lux(50IRE) 0.0004 Lux (15IRE, Sense up x256) | 0.4 lux @ 50IRE F1.2, 0.001 lux sens up 256x |
| Sensitivity B&W: | 0.4 Lux(50IRE) @ F1.2, 0.001 Lux (15IRE, Sens up x256) | 0.04 Lux(50IRE) 0.00004 Lux (15IRE, sense up x256) | 0 Lux LED IR on | 0.04 lux @ 50IRE f1.2, 0.0001 lux sens up 256x |
| S/N Ratio: | 52 dB | 52 dB | 52 dB | 52 dB |
| Lens Focal Length: | 2.8 ~ 10.5 mm (TAMRON) | 2.8 ~ 10.5 mm (TAMRON) | 2.8 ~ 10.5 mm (TAMRON) | 2.8 ~ 10.5 mm (TAMRON) |
| Lens Drive Type: | Auto iris, DC | Auto iris, DC | Auto iris, DC | Auto iris, DC |
| Viewing Angle: | 93.7°(H) ~ 28.3°(V) | 93.7°(H) ~ 28.3°(V) | 93.7°(H) ~ 28.3°(V) | 93.7°(H) ~ 28.3°(V) |
| Sens Up: | Off ~ x256, auto | Off ~ x256, auto | Off ~ x256, auto | Off ~ x256, auto |
| Motion Detection: | On/ Off/ Sensitivity/ Area setting | On/ Off/ Sensitivity/ Area setting | On/ Off/ Sensitivity/ Area setting | On/ Off/ Sensitivity/ Area setting |
| Number of Privacy Zones: | 8 (polygonal method) | 8 (polygonal method) | 8 (polygonal method) | 8 (polygonal method) |
| High Speed Shutter: | 1/50 ~ 1/10.000 sec, auto | 1/50 ~ 1/10.000 sec, auto | 1/50 ~ 1/10.000 sec, auto | 1/50 ~ 1/10.000 sec, auto |
| AGC: | Off/On (Very LOW/ LOW/ Mid/ High/ Very High/ User/ Fix) | Off/On (Very LOW/ LOW/ Mid/ High/ Very High/ User/ Fix) | Off/On (Very LOW/ LOW/ Mid/ High/ Very High/ User/ Fix) | Off/On (Very LOW/ LOW/ Mid/ High/ Very High/ User/ Fix) |
| BLC: | On/Off/Area/Level | On/Off/Area/Level | On/Off/Area/Level | On/Off/Area/Level/WDR |
| Digital Noise Reduction (DNR): | Off / On (Low/Middle/High/ User) | Off / On (Low/Middle/High/ User) | Off / On (Low/Middle/High/ User) | Off / On (Low/Middle/High/ User) |
| Digital Image Stabilization (DIS): | Off/On | Off/On | Off/On | Off/On |
| Digital Zoom: | Off/1 ~ 10x | Off/1 ~ 10x | Off/1 ~ 10x | Off/1 ~ 10x |
| Reverse: | Off/ H-REV/ V-REV/ HV-REV/ POSITIV/ NEGATIV | Off/ H-REV/ V-REV/ HV-REV/ POSITIV/ NEGATIV | Off/ H-REV/ V-REV/ HV-REV/ POSITIV/ NEGATIV | Off/ H-REV/ V-REV/ HV-REV/ POSITIV/ NEGATIV |
| PIP: | On/Off | On/Off | On/Off | On/Off |
| Intelligent Video Analytics: | Tracking/Detection | Tracking/Detection | Tracking/Detection | Tracking/Detection |
| OSD: | Yes, E/F/D/S/I | Yes, E/F/D/S/I | Yes, E/F/D/S/I | Yes, E/F/D/S/I |
| Wide Dynamic Range: | na | na | na | On/Off, extreme backlight compensation (WDR x160) |
| Camera ID: | 54 character, 2 lines | 54 character, 2 lines | 54 character, 2 lines | 54 character, 2 lines |
| White Balance: | ATW-1/ATW-2/AWC/Manual | ATW-1/ATW-2/AWC/Manual | ATW-1/ATW-2/AWC/Manual | ATW-1/ATW-2/AWC/Manual |
| IR LED: | na | na | 36 pcs. | na |
| Optical Wavelength: | na | na | 850 nm | na |
| Max. IR Distance: | na | na | 15/30 m (according to scene reflexion) | na |
| Humidity: | less than 90% | less than 90% | less than 90% | less than 90% |
| Protection Rating: | IP66 | IP66 | IP66 | IP66 |
| Remote Control: | CCVC, data on coax cable | CCVC, data on coax cable | CCVC, data on coax cable | CCVC, data on coax cable |
| Video Outputs: | 1 CVBS 1 Vpp (BNC) & 1 test monitor out | 1 CVBS 1 Vpp (BNC) & 1 test monitor out | 1 CVBS 1 Vpp (BNC) & 1 test monitor out | 1 CVBS 1 Vpp (BNC) & 1 test monitor out |
| Accessories included: | Cable for service monitor with service remote control | Cable for service monitor with service remote control | Cable for service monitor with service remote control | Cable for service monitor with service remote control |
| Operating Temperature: | -10°C ~ +50°C | -10°C ~ +50°C | -10°C ~ +50°C | -10°C ~ +50°C |
| Supply Voltage: | 12 VDC/24 VAC | 12 VDC/24 VAC | 12 VDC/24 VAC | 12 VDC/24 VAC |
| Power Consumption: | 5.5 W | 5.5 W | 7.5 W | 5.5 W |
| Dimensions: | Ø 152 x 126 mm | Ø 152 x 126 mm | Ø 152 x 126 mm | Ø 152 x 126 mm |
| Weight: | 1.12 kg | 1.12 kg | 1.12 kg | 1.12 kg |

Accessories for Anti Vandal Fixed Dome Cameras

Fan/Heater Kit

Model:

GHT-24V

Suitable for:

GCA-B0322V, GCA-B1323V,
GCA-B0325V, GCA-B0323V

Heater:

Ton 5°C, Toff 10°C

Operating Temperature:

-40°C ~ +50°C

Supply Voltage:

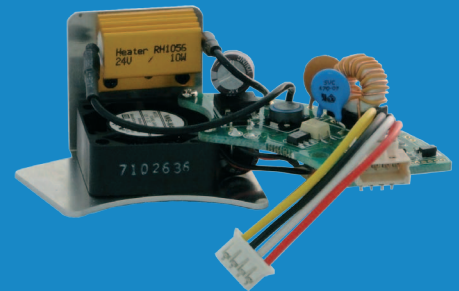
24 VAC

Power Consumption:

11 W

Dimensions:

90 x 40 x 30 mm



Wall Bracket

Model:

GBR-WA01

Suitable for:

GCA-B0322V, GCA-B1323V,
GCA-B0325V, GCA-B0323V

Body material:

Die cast aluminium

Colour:

Shiny white

Dimensions:

168.5 x 152 x 252 mm

Weight:

0.9 kg





Quality that will make you smile!



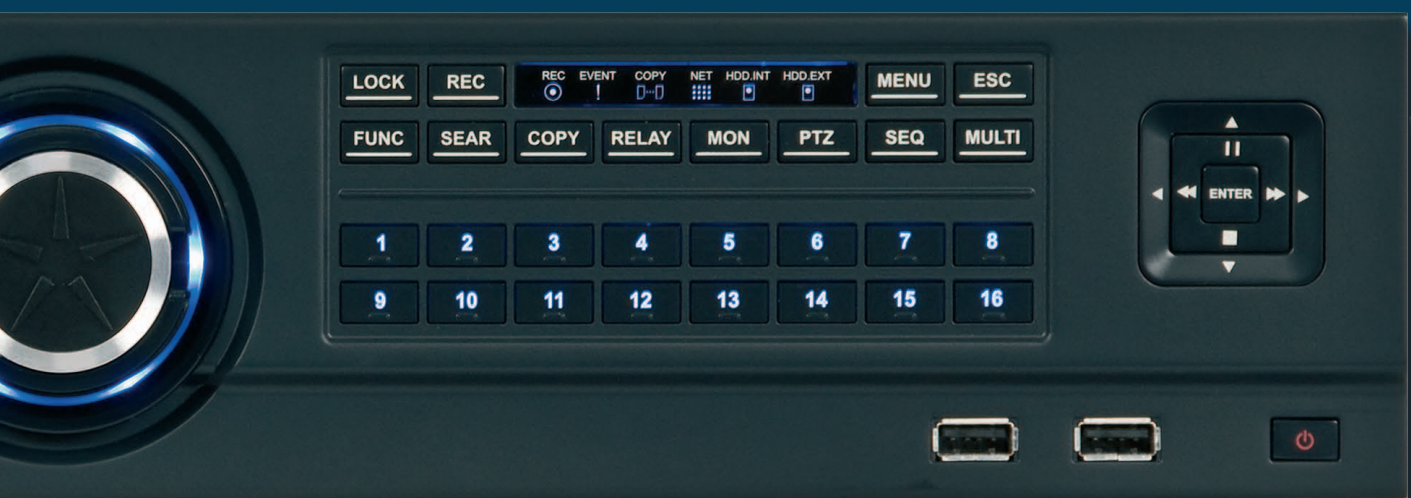
You can now choose an option with a small but highly significant difference – because once again, you can rely on Grundig's outstanding quality and smart technology. For video security that lives up to its promise when it comes to operation, installation and service.

Video security designed in Germany is back!

For further information, please visit www.grundig-cctv.com.

FOR A GOOD **REASON**
GRUNDIG

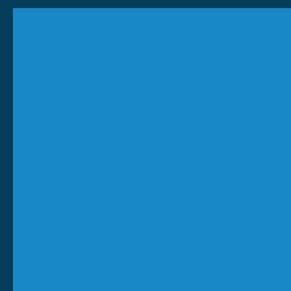
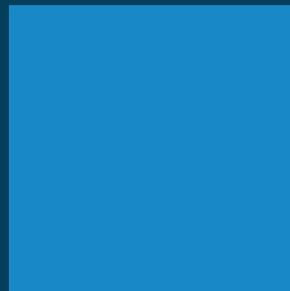
Digital Video Recorders



GRUNDIG DVRs

Functional and secure

Digital video recording is at the core of all surveillance systems. It is essential that a DVR is reliable, easily installed and controlled and meets all site application needs. The Grundig DVR range has been designed to offer outstanding functionality, any time and any where. The range includes 8, 16 and 32 channel models; all equipped with a DVD-RW drive and two USB ports for back-up purposes. Their advanced functionality makes site operation and management straightforward.



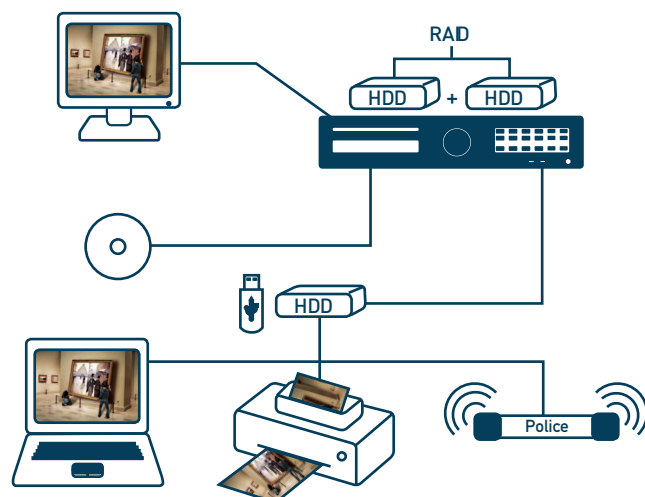
Digital Video Recorders

Technologies and Features

Comprehensive back-up options and Mirror Mode

Grundig DVRs have a wide range of back-up options. Several models are RAID storage compatible. Up to 4 SATA and 1 eSATA hard drives can be installed and duplicated in Mirror Mode.

External hard drives can also be connected to the DVR, via the two front mounted USB ports, for simple data transfer. The Grundig DVR automatically monitors all its hard drives and will send an email alert, should the hard drive experience any problems.



Real-time recording

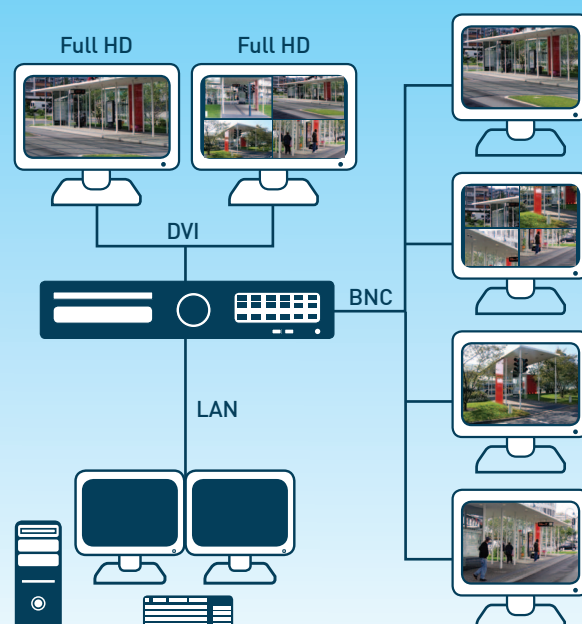
Grundig DVRs are designed for real-time recording on all channels simultaneously, ensuring no critical data is missed, lost or impossible to see.

Depending on the model, Grundig DVRs will support up to 4 CIF resolution on every channel (GDV-C4416A), whilst delivering outstanding image quality. The combination of up to 8 Terabyte of internal hard drive (1 TB standard equipment) and the use of efficient H.264 image compression technology ensures that Grundig DVRs always have enough memory available, whatever the application.

Multi-Monitor support. View up to 128 live channels.

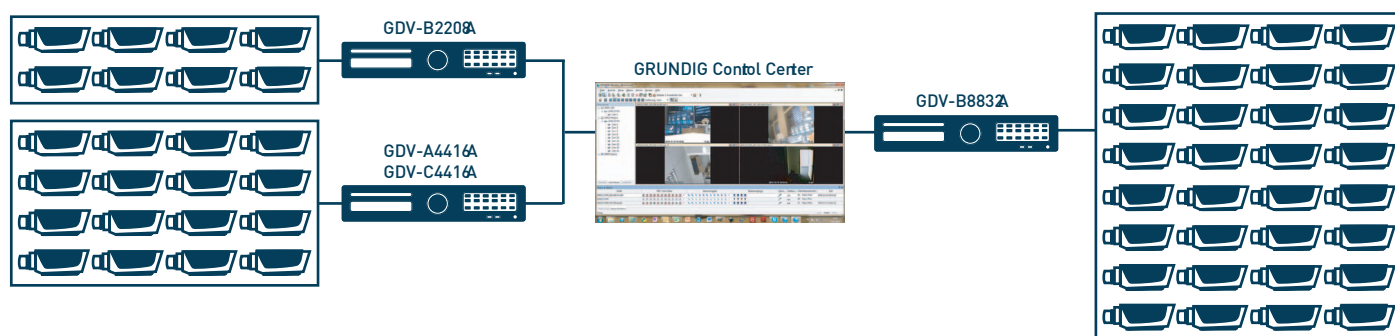
All Grundig DVRs support up to 3 monitors, with the GDV-B8832A and GDV-C4416A supporting up to six (2 x DVI and 4 x BNC). This enables unprecedented system design flexibility.

By using the Grundig Control Centre Software, 64 different video channels can be displayed on each of the two monitors simultaneously, creating a 128 channel system. Alternatively, one monitor can be used for live video, one for a system overview map or for administration.



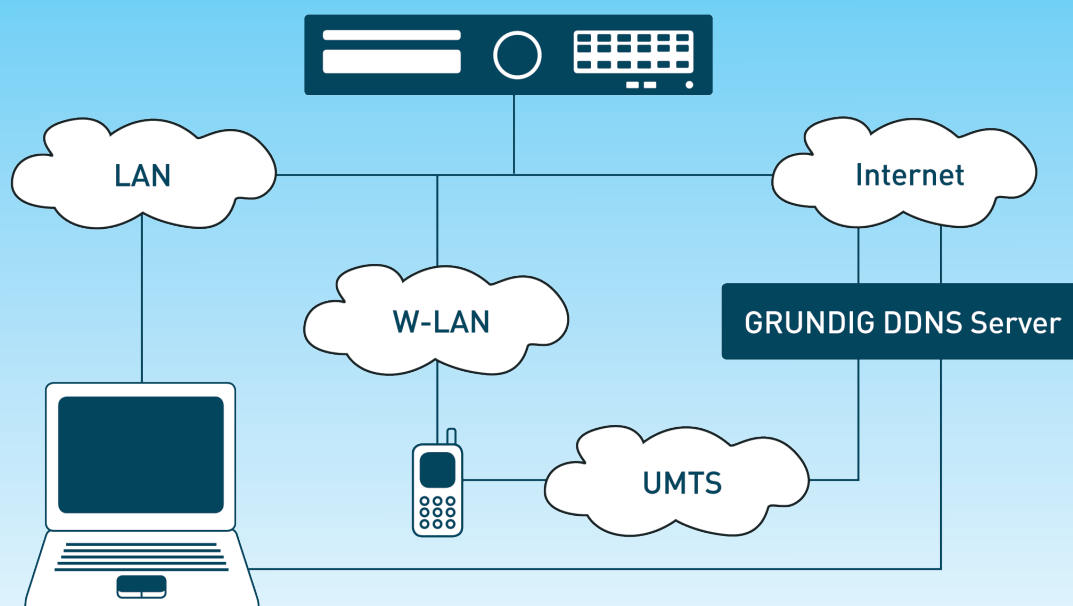
Multi-channel DVR operation

The Grundig Control Software allows an entire surveillance system to be controlled from a PC. The surveillance system can be scaled up to include as many cameras as required in DVR modules of 8, 16 and 32 channels. However large the system, it can still be controlled via a PC. Using Grundig products, it is simple to create a bespoke security system of any size, control it using a PC and incorporate further cameras if the system expands.



Remote Monitoring using the Grundig Control Centre and Mobile Viewer

The Grundig Control Centre and Mobile Viewer offer unlimited, 24 hour access to each DVR. These remote facilities allow live monitoring and playback over the internet, using the Internet Explorer compatible, Grundig Webviewer. Most other commonly available JavaScript web browsers can also be used for live DVR access, regardless of PC operating system used. The Grundig Mobile Viewer allows DVR surveillance video to be viewed via any web-enabled mobile phone.



Digital Video Recorders



Key Features

- Built-in DVD-RW burner for backup
- High Picture Quality: H.264, Full D1(704x576)
- Remote monitoring and control through network (LAN)
- Various recording features (schedule, motion, alarm)
- Mouse (USB) and PC (IP) Control
- DVI output maximum resolution of 1920x1080
- USB2.0 Interface: USB Memory/ USB external HDD
- Compatible with many mobile devices such as iPhone®, Blackberry®, Android® and Windows Mobile®

Ordering Information

| Item Code | Short Description |
|------------|---|
| GDV-B2208A | 8-Ch H.264 Digital Video Recorder 100 fps @ D1 |
| GDV-A4416A | 16-Ch H.264 Digital Video Recorder 100 fps @ D1 |
| GDV-C4416A | 16-Ch H.264 Digital Video Recorder 400 fps @ D1 |
| GDV-B8832A | 32-Ch H.264 Digital Video Recorder 400 fps @ D1 800 fps Half D1 |

CMS Central Monitoring Software included

Technical Specifications

| Model | GDV-B2208A | GDV-A4416A | GDV-C4416A | GDV-B8832A |
|-------------------------|---|---|---|---|
| Operating System: | Embedded OS | Embedded OS | Embedded OS | Embedded OS |
| Video Inputs: | 8 CH Composite, BNC, Looped | 16 CH Composite, BNC, Looped | 16 CH Composite, BNC, Looped | 32 CH Composite, BNC |
| Video Outputs: | 2 CVBS (1 Main, 1 Spot), 1 DVI (HDMI/VGA compatible) | 2 CVBS (1 Main, 1 Spot), 1 DVI (HDMI/VGA compatible) | 2 DVI (HDMI/VGA compatible); 4 CVBS (2 Main, 2 Spot) | 2 DVI (HDMI/VGA compatible); 4 CVBS (2 Main, 2 Spot) |
| Basic Internal Storage: | 1 TB | 1 TB | 1 TB | 1 TB |
| Storage Max. Expansion: | 6 TB, 2 SATA and 1 eSATA Port | 6 TB, 2 SATA and 1 eSATA Port | 10 TB, 4 SATA and 1 eSATA Port | 10 TB, 4 SATA and 1 eSATA Port |
| Video Compression: | H.264, JPEG | H.264, JPEG | H.264, JPEG | H.264, JPEG |
| Recording Resolution: | Full D1 (704x576), Half D1 (704x288), CIF (352x288) | Full D1 (704x576), Half D1 (704x288), CIF (352x288) | Full D1 (704x576), Half D1 (704x288), CIF (352x288) | Full D1 (704x576), Half D1 (704x288), CIF (352x288) |
| Recording Speed: | 200fps (352x288), 200fps (704x288), 100fps (704x576) | 400fps (352x288), 200fps (704x288), 100fps (704x576) | 400fps (352x288), 400fps (704x288), 400fps (704x576) | 800fps (352x288), 800fps (704x288), 400fps (704x576) |
| Recording Mode: | Continuous, Event Alarm, Motion, Video Loss, Schedule, Manual | Continuous, Event Alarm, Motion, Video Loss, Schedule, Manual | Continuous, Event Alarm, Motion, Video Loss, Schedule, Manual | Continuous, Event Alarm, Motion, Video Loss, Schedule, Manual |
| Display Resolution: | max. 1920 x 1080 | max. 1920 x 1080 | max. 1920 x 1080 | max. 1920 x 1080 |
| Display Speed: | 200 fps | 400 fps | 400 fps | 800 fps |
| Internal Backup: | Built in DVD-RW drive | Built in DVD-RW drive | Built in DVD-RW drive | Built in DVD-RW drive |
| External Backup: | USB HDD, USB Memory, DVD-R, Network, eSATA | USB HDD, USB Memory, DVD-R, Network, eSATA | USB HDD, USB Memory, DVD-R, Network, eSATA | USB HDD, USB Memory, DVD-R, Network, eSATA |
| Motion Detection: | On/Off/Area Setting | On/Off/Area Setting | On/Off/Area Setting | On/Off/Area Setting |
| Event Source: | Motion, Alarm, Text, Video Loss, System | Motion, Alarm, Text, Video Loss, System | Motion, Alarm, Text, Video Loss, System | Motion, Alarm, Text, Video Loss, System |
| Event Action: | Pop-Up, Relay, E-Mail, FTP, Network, Buzzer, PTZ Preset | Pop-Up, Relay, E-Mail, FTP, Network, Buzzer, PTZ Preset | Pop-Up, Relay, E-Mail, FTP, Network, Buzzer, PTZ Preset | Pop-Up, Relay, E-Mail, FTP, Network, Buzzer, PTZ Preset |
| Audio Inputs: | 4 CH, RCA | 4 CH, RCA | 16ch (4 RCA built-in, 12 D-sub cable optional) | 16ch (4 RCA built-in, 12 D-sub cable optional) |
| Audio Outputs: | 1 CH, RCA | 1 CH, RCA | 1 CH, RCA | 1 CH, RCA |
| Alarm Inputs: | 8 contact input N/O or N/C | 16 contact input N/O or N/C | 16 contact input N/O or N/C | 16 contact input N/O or N/C |
| Alarm Outputs: | 2 Relay | 2 Relay | 4 Relay | 4 Relay |
| Interfaces: | 2 port RS485, 1 port RS232, System Keyboard, 1 Ethernet and 2 USB 2.0 ports | 2 port RS485, 1 port RS232, System Keyboard, 1 Ethernet and 2 USB 2.0 ports | 2 port RS485, 1 port RS232, System Keyboard, 1 NAS, 1 Ethernet and 2 USB 2.0 ports | 2 port RS485, 1 port RS232, System Keyboard, 1 NAS, 1 Ethernet and 2 USB 2.0 ports |
| ATM/POS: | Support up to 16 ATM/POS with VSI-Pro Hydra Modules | Support up to 16 ATM/POS with VSI-Pro Hydra Modules | Support up to 16 ATM/POS with VSI-Pro Hydra Modules | Support up to 16 ATM/POS with VSI-Pro Hydra Modules |
| Video Streaming: | Versatile Triple Streaming (Dual H.264 + single JPEG) | Versatile Triple Streaming (Dual H.264 + single JPEG) | Versatile Triple Streaming (Dual H.264 + single JPEG) | Versatile Triple Streaming (Dual H.264 + single JPEG) |
| Network: | Ethernet, 10/100 Base-T, ADSL Static IP, ADSL Dynamic IP(PPPoE), Cable Network (Dynamic IP) | Ethernet, 10/100 Base-T, ADSL Static IP, ADSL Dynamic IP(PPPoE), Cable Network (Dynamic IP) | Ethernet, 10/100 Base-T for PC client, 1000 Base-T for storage, ADSL Static IP, ADSL Dynamic IP(PPPoE), Cable Network (Dynamic IP) | Ethernet, 10/100 Base-T for PC client, 1000 Base-T for storage, ADSL Static IP, ADSL Dynamic IP(PPPoE), Cable Network (Dynamic IP) |
| Client software: | Windows (XP, Vista, 7), Web Viewer: IE, Firefox, Safari, Chrome; Mobile: iPhone (OS4), Blackberry, Android, Windows Mobile, Symbian | Windows (XP, Vista, 7), Web Viewer: IE, Firefox, Safari, Chrome; Mobile: iPhone (OS4), Blackberry, Android, Windows Mobile, Symbian | Windows (XP, Vista, 7), Web Viewer: IE, Firefox, Safari, Chrome; Mobile: iPhone (OS4), Blackberry, Android, Windows Mobile, Symbian | Windows (XP, Vista, 7), Web Viewer: IE, Firefox, Safari, Chrome; Mobile: iPhone (OS4), Blackberry, Android, Windows Mobile, Symbian |
| Time Setting: | Setting by NTP Server local or internet | Setting by NTP Server local or internet | Setting by NTP Server local or internet | Setting by NTP Server local or internet |
| Multiplex Function: | Pentaplex | Pentaplex | Pentaplex | Pentaplex |
| Auto Switching: | 0, 3, 5, 10, 20, 30 sec, Event or manual | 0, 3, 5, 10, 20, 30 sec, Event or manual | 0, 3, 5, 10, 20, 30 sec, Event or manual | 0, 3, 5, 10, 20, 30 sec, Event or manual |
| Supply Voltage: | 110 ~ 240 VAC/50Hz | 110 ~ 240 VAC/50Hz | 110 ~ 240 VAC/50Hz | 110 ~ 240 VAC/50Hz |
| Power Consumption: | 75 W | 75 W | 75 W | 85 W |
| Dimensions: | 445 x 88 x 418 mm | 445 x 88 x 418 mm | 445 x 88 x 418 mm | 445 x 88 x 418 mm |

10" Monitor



10" Monitor



Key Features

- 10,4" (26cm) LCD/TFT Monitor
- High Contrast Display
- Wide Viewing Angle
- 1 CVBS looped, 1 VGA input
- Power Supply included

Ordering Information

| Item Code | Short Description |
|-----------|---|
| GMT-1031P | 10.4" LCD/TFT Monitor Metal Case Design |

| | |
|------------------------|--|
| Model | GMT-1031P |
| Resolution: | 640 x 480 pixel |
| Video Standard: | PAL/NTSC |
| Pixel Pitch: | 0.33 mm[H] x 0.33 mm[V] |
| Video Inputs: | 1 CH Composite, BNC, Looped / 1 CH VGA |
| Brightness: | 350 cd/m ² |
| Response Time: | 15/30 ms (tr/ta) |
| Viewing Angle: | 70°(L)70°(R)40°(T)70°(B) |
| Contrast ratio: | 300:1 |
| Display Mode: | AV (BNC), VGA |
| Operating Temperature: | 0°C ~ +50°C |
| Storage Temperature: | -20°C ~ +60°C |
| Accessories included: | Table stand bracket & PSU & VGA cable |
| MTBF at 25° C: | > 30,000 hours |
| Vesa Mount: | 75 x 75 mm |
| Supply Voltage: | 12 VDC / 2 A |
| Power Consumption: | <20 W |
| Dimensions: | 268 x 214 x 41.5 mm |
| Weight: | 1.71 kg |

Accessories for Monitors

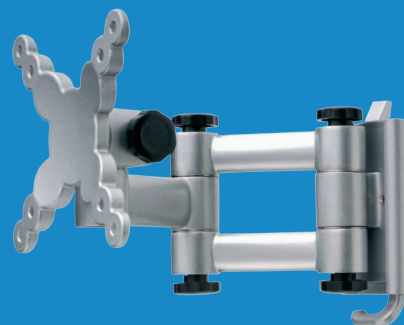
Monitor Bracket 18kg Load Fix

| | |
|---------------------------|---------------------------|
| Model: | GBR-M31553 |
| Recommended Monitor Size: | 33 cm ~ 68 cm (13" ~ 27") |
| Vesa Mount: | 75 ~ 100 mm |
| Load max.: | 18 kg |
| Colour: | Silver |
| Dimensions: | 120 x 170 x 30 mm |



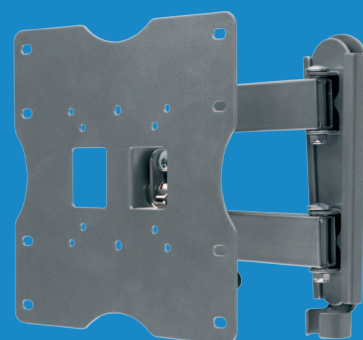
Monitor Bracket 18kg Load Pan/Tilt Function

| | |
|---------------------------|---------------------------|
| Model: | GBR-M31555 |
| Recommended Monitor Size: | 33 cm ~ 68 cm (13" ~ 27") |
| Vesa Mount: | 75 ~ 100 mm |
| Load max.: | 18 kg |
| Colour: | Silver |



Monitor Bracket 25kg Load Pan/Tilt Function

| | |
|---------------------------|---------------------------|
| Model: | GBR-M31556 |
| Recommended Monitor Size: | 43 cm ~ 81 cm (17" ~ 32") |
| Vesa Mount: | 75 ~ 100 mm |
| Load max.: | 25 kg |
| Colour: | Silver |
| Dimensions: | 230 x 240 x 350 mm |



Accessories for Monitors

Monitor Bracket 40kg Load Tilt Function

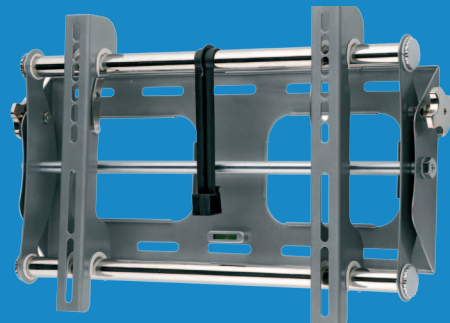
Model: GBR-M31560

Recommended Monitor Size: 58 cm ~ 94 cm (23" ~ 37")

Load max.: 40 kg

Colour: Silver

Dimensions: 570 x 350 x 90 mm



Monitor Bracket 75kg Load Tilt Function

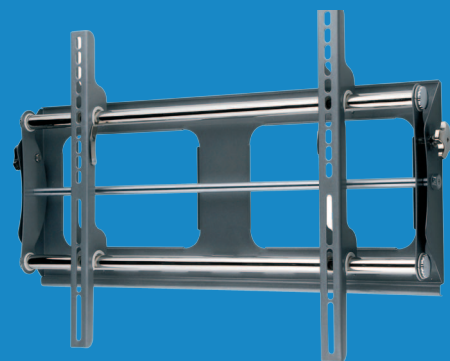
Model: GBR-M31561

Recommended Monitor Size: 94 cm ~ 127 cm (37" ~ 50")

Load max.: 75 kg

Colour: Silver

Dimensions: 800 x 530 x 100 mm



FOR A GOOD **REASON**
GRUNDIG